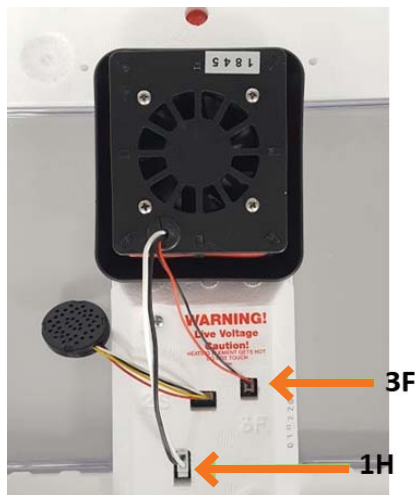


## 11. Install Modified Heating Element into Incubator

Reinstall the modified heating element into the incubator using the original screws and washers (*image 18*). **Caution: Overtightening screws can dent or tear the incubator lid.** Plug the black and white heating element cord back into slot 1H and the red and black fan cord into slot 3F (*image 19*). **Note: Push the fan wire into the plug as far as you can using your fingers, then use a small flathead screwdriver to pop it into place.**



# Little Giant 9300 Incubator Fan Installation Instructions



## Package Contents

### Included Items:

- Incubator Warehouse Fan
- Replacement Fan Cover
- Super Glue

### Items Needed:

- Little Giant 9300 Still Air Incubator
- Phillips Screwdriver
- Small Flathead Screwdriver
- Scissors (or other cutting tool)

### Video Installation Guide

<https://incubatorwarehouse.com/little-giant-9300-fan-with-installation-guide.html>

and scroll to the bottom of the listing.

### QR Code



## Additional Resources

### Video Installation Guide

Go to

<https://incubatorwarehouse.com/little-giant-9300-fan-with-installation-guide.html>

and scroll to the bottom of the listing.

### QR Code



Need additional help? Please feel free to contact us.

Email: [service@incubatorwarehouse.com](mailto:service@incubatorwarehouse.com)

Phone: 208-740-1344

Facebook: [www.facebook.com/IncubatorWarehouse/](https://www.facebook.com/IncubatorWarehouse/)



## Installation

### 1. Disconnect Cord

Remove lid from incubator. On the bottom of the lid, disconnect the black and white wire for the heating element from the hole labeled "1H" (*image 1*).

### 2. Remove Heating Element

While supporting the heating element, unscrew the two mounting screws on the top side of the incubator (*image 2*), remove the heating element from the incubator, and set the incubator aside. **Important: save screws and washers.**

### 3. Glue Heating Element

Place the heating element screw side down (*image 3*). Apply the super glue to the ends of the heating element assembly pegs ensuring that they are covered (*image 4*). This prevents the heating element from falling apart when the cover is removed. Ensure super glue is dry before moving on to the next step.

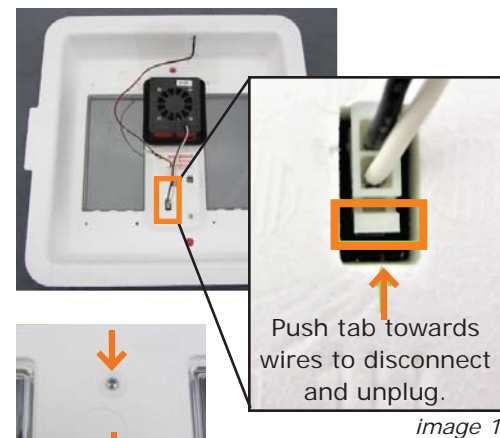


image 1



image 2



image 4



image 3

## 4. Remove Screws

Turn the heating element over so the fan cover is facing up. Using a Phillips screwdriver, remove the four screws that hold the fan cover on (image 5). **Important: Save screws.**



image 5

## 5. Open Heater Unit

Gently remove fan cover from assembly pegs, slide it down the wires, and set it above the heating element. **Note: Try not to move the red heating element wires. This will make reassembly much easier.** Push black grommet (image 6) out of the wire hole and slide it to the end of the wire (image 7).

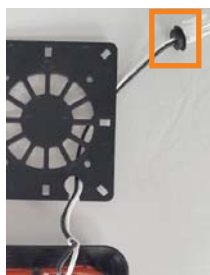


image 7



image 6

## 6. Determin Fan Cover Type

Due to a recent change in the manufacturing of the heating elements, there are two possible styles of fan covers. Type A requires a few extra steps in order to install the fan, so it is important to determine which variation you have.

For type A (image 8), continue with the next step. For type B (image 9), discard the four black spacers and skip to **step 9**. **Note: For cover type B, the included replacement fan cover is not needed.**

**Type A**  
Attached  
Spacers

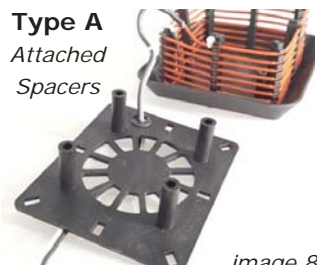


image 8

## 7. Remove Old Fan Cover

Find a tool that can cut through plastic. **Note: Scissors will work, but if you have something more powerful, it will make the job easier.** While holding the black and white wires out of the way (image 10), carefully cut a slot from the wire hole to the edge of the cover and remove the cover from the cords (image 11). The removed cover may be discarded.



image 10

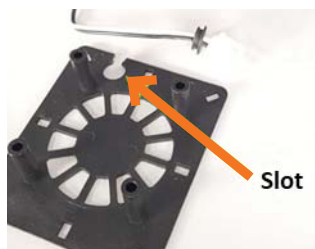


image 11

**Type B**  
Loose  
Spacers

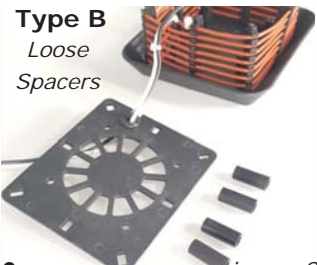


image 9

## 8. Attach Replacement Fan Cover

Slide the included replacement fan cover onto black and white wires (image 12).



image 12

## 9. Insert Fan

Carefully set the fan into the heating element (image 13). Make sure the fan wires are in the same corner as the heating element wires, the holes in the fan are lined up with the holes in the mounting pegs, and the sticker is facing down. Run fan wires through the same hole as the heating element wires and insert fan cord into the grommet (image 14).



image 13

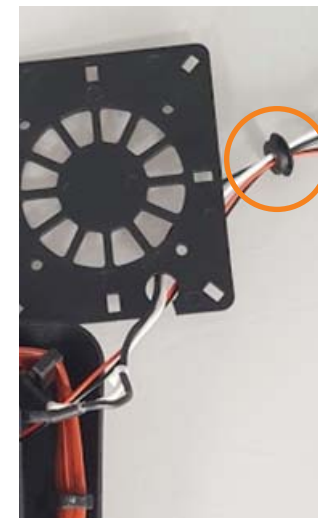


image 14

## 10. Reattach Cover

Carefully align the rectangular holes on the edges of the fan cover with the eight assembly pegs (image 15a&b). **Important: Make sure the wires are coming out of the wire hole (image 16).** Screw the cover into place using the original four screws (image 16). Slide the grommet down the wires and press it back into the hole (image 17).



image 17



image 15a



image 15b



image 16